

IMPORTANT SAFETY AND INSTALLATION INSTRUCTIONS

WARNING: Risk of fire and electrical shock. This product is to be installed by a qualified electrician only.

CAUTION: When using electrical equipment, basic safety precautions should always be followed including the following: Read all instructions carefully before installation and save

for future use. Make sure installation and all connections are in accordance with National Electrical Code and any local regulations. To avoid possible electrical shock, be sure that power supply is turned off before installing or servicing this fixture. Servicing should be performed by qualified service personnel.

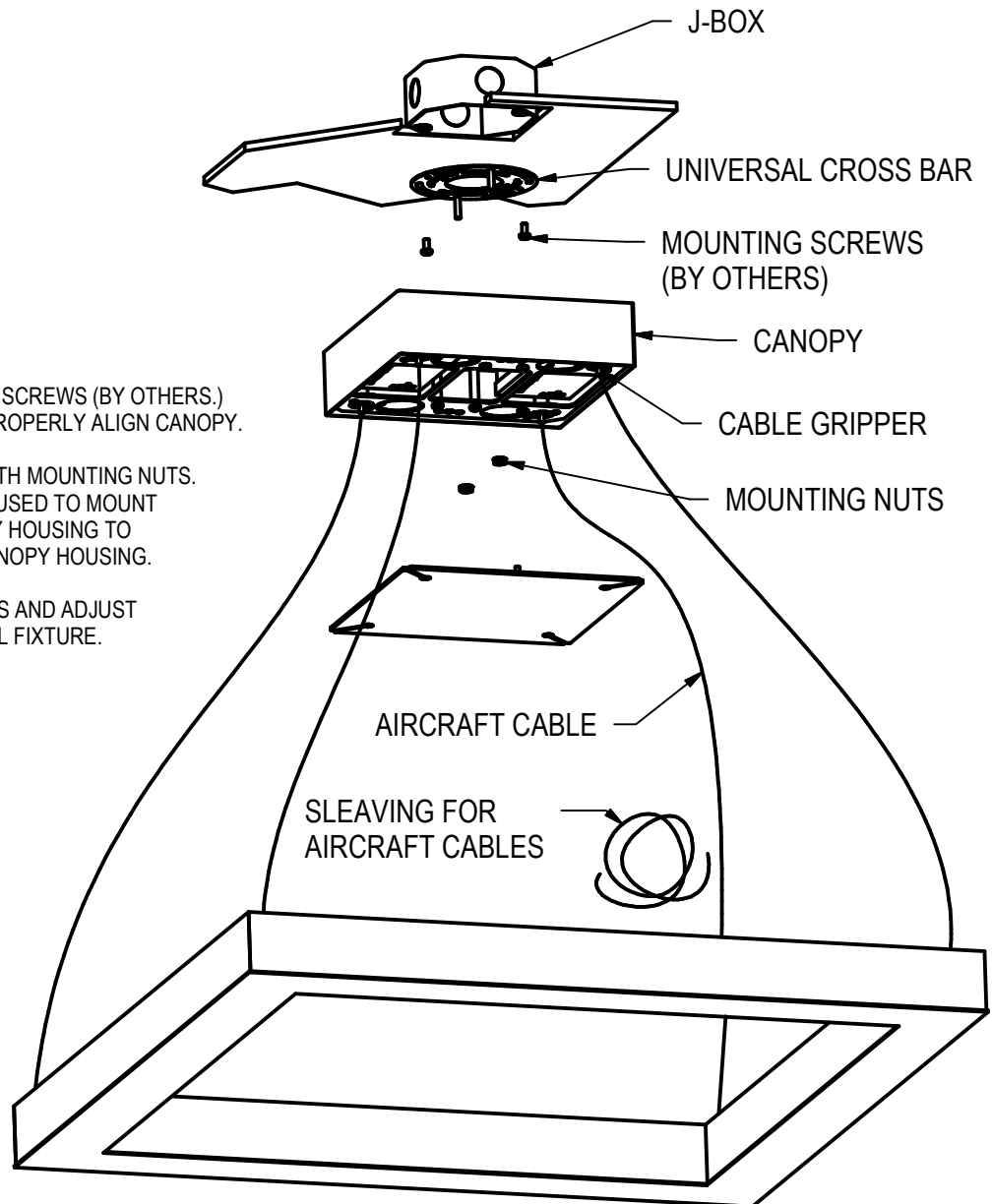
These instructions do not claim to cover all details or variations. When additional information is desired, please contact your SPI representative.

NOVATO 2 x 2 FRAME - MCE

INSTALLATION:

1. UN-SNAP CANOPY COVER TO GAIN ACCESS TO MOUNTING HOLES.
2. MOUNT UNIVERSAL CROSS BAR TO J-BOX WITH SCREWS (BY OTHERS.) ROTATE CROSSBAR USING SLOTS IN ORDER TO PROPERLY ALIGN CANOPY.
3. MOUNT CANOPY TO UNIVERSAL CROSS BAR WITH MOUNTING NUTS. IF NEEDED, AUXILIARY MOUNTING HOLES CAN BE USED TO MOUNT INDEPENDENTLY OF THE J-BOX. REMOVE CANOPY HOUSING TO GAIN ACCESS TO AUXILIARY HOLES. REPLACE CANOPY HOUSING.
4. INSERT AIRCRAFT CABLE INTO CABLE GRIPPERS AND ADJUST TO DESIRED FIXTURE SUSPENSION HEIGHT. LEVEL FIXTURE.

(CONTINUED ON PAGE 2)



IMPORTANT SAFETY AND INSTALLATION INSTRUCTIONS

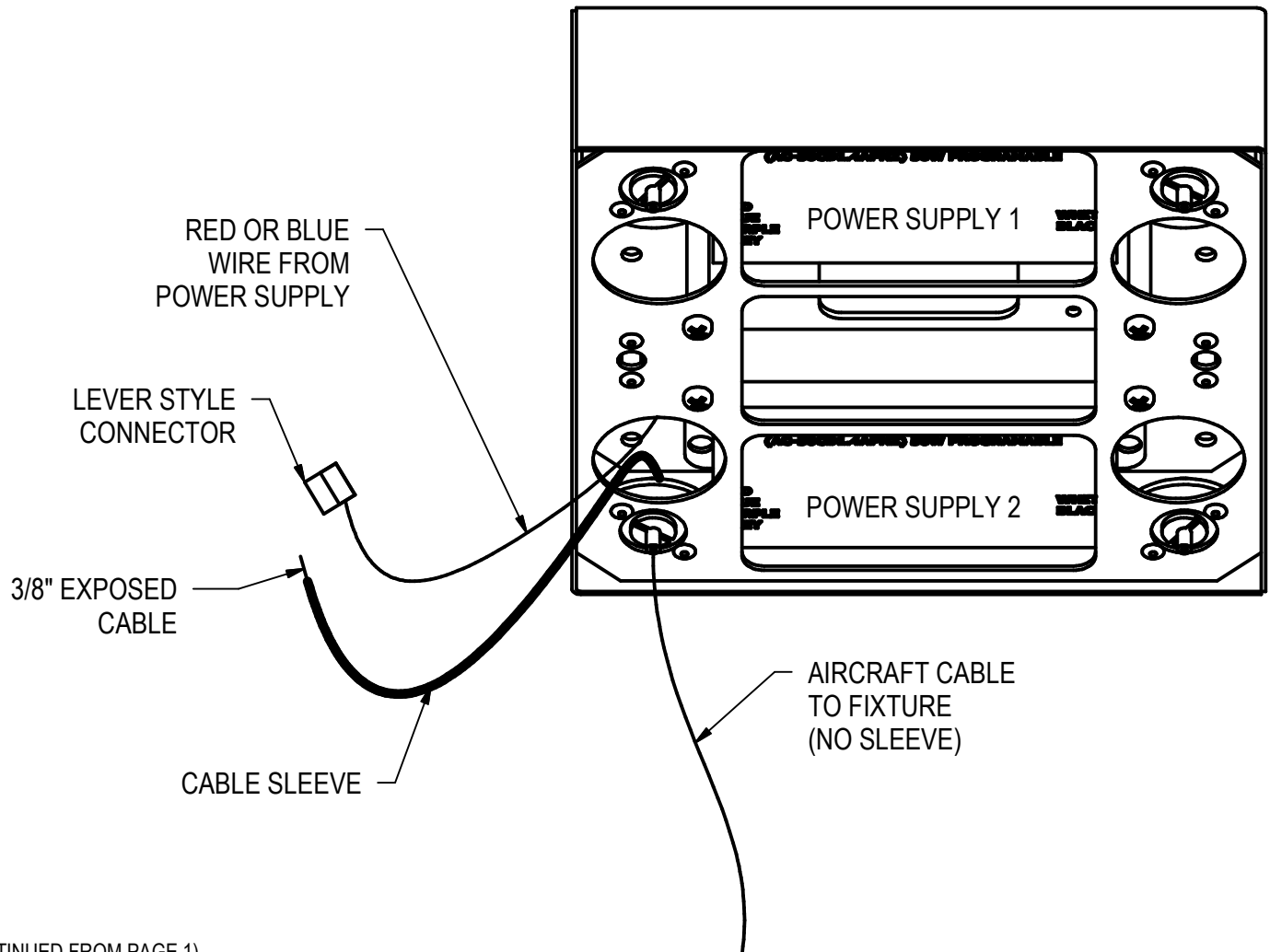
WARNING: Risk of fire and electrical shock. This product is to be installed by a qualified electrician only.

CAUTION: When using electrical equipment, basic safety precautions should always be followed including the following: Read all instructions carefully before installation and save

for future use. Make sure installation and all connections are in accordance with National Electrical Code and any local regulations. To avoid possible electrical shock, be sure that power supply is turned off before installing or servicing this fixture. Servicing should be performed by qualified service personnel.

These instructions do not claim to cover all details or variations. When additional information is desired, please contact your SPI representative.

NOVATO 2 x 2 FRAME - MCE



(CONTINUED FROM PAGE 1)

5. CUT SUPPLIED WIRE SLEEVING TO EQUAL LENGTHS FOR EACH ENERGIZED CABLE. SLIDE SLEEVE OVER THE EXPOSED CABLE WITHIN THE CANOPY. TRIM CABLE TO APPROXIMATELY 3/8" EXPOSED FROM END OF SLEEVING.

6. USING THE SUPPLIED LEVER CONNECTOR, CONNECT END OF EACH AIRCRAFT CABLE TO EITHER THE RED (POS +) OR BLUE (NEG -) WIRES OF THE POWER SUPPLIES. THE POLARITY OF THE CABLE, (POS +) OR (NEG -), MUST MATCH THE POLARITY OF THE POWER SUPPLY WIRES. AIRCRAFT CABLES LABELED WITH THE SAME SUPPLY NUMBER MUST BE ATTACHED TO THE SAME POWER SUPPLY. IN SINGLE SUPPLY VARIATIONS ONLY TWO AIRCRAFT CABLES WILL BE CONNECTED.

7. CONNECT THE HIGH VOLTAGE SUPPLY LEADS TO THE BRANCH CIRCUIT AND PUSH CONNECTIONS INTO J-BOX. WIRE OR CAP-OFF DIMMING LEADS IF APPLICABLE.

8. ALIGN CANOPY COVER TO AIRCRAFT CABLES AND SNAP ONTO CANOPY.

PAGE 2

12/18/18

IS103449X